



HEALTH & SOCIAL CARE

SECURE AND MODERN IT FOR THE HEALTH AND SOCIAL CARE SECTOR

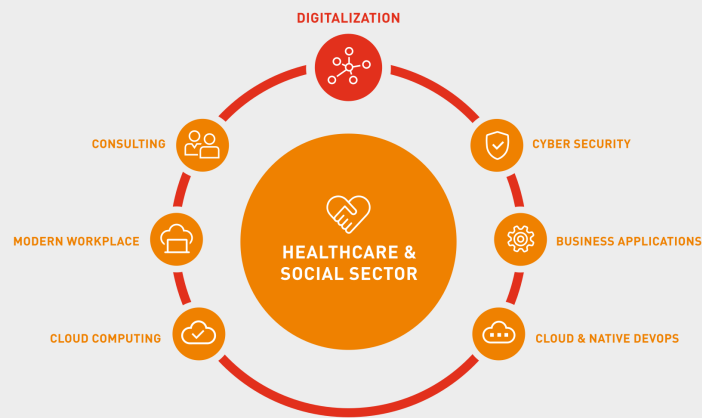
In health & social care, efficient systems are crucial to spend as much time as possible caring for patients. Our certified healthcare industry solution and personal consulting support you in the digital transition and enable more resources for the really important tasks in your everyday professional life.

YOUR ADVANTAGES

- ✔ YEARS OF EXPERIENCE IN THE HEALTH & SOCIAL CARE SECTOR
- ✔ INTEGRATION OF ANY INDUSTRY SOFTWARE
- ✔ 24/7 EMERGENCY SERVICES
- ✔ HIPAA & GDPR COMPLIANCE
- ✔ EVERYTHING FROM THE SWISS PRIVATE CLOUD
- ✔ HIGHEST SECURITY

THE PATH TO DIGITAL SUCCESS ANALYSIS, CONSULTING & IMPLEMENTATION

Keeping existing and critical infrastructures continuously on a modern digital level requires experience and intensive personal consulting. Our digitisation portfolio therefore includes the full range of services needed for successful implementation. With our service, you receive a holistic solution and place your trust in people who know how important time with your patients is to you.



«THANKS
TO MTF, WE
CAN ALSO
LIVE OUR
INNOVATIVENESS
IN IT.»

David Widmer
IT & Real Estate, WG
Treffpunkt Association

DIGITISE SECURELY

MORE TIME, HIGHEST SECURITY & EFFICIENCY

DIGITAL IT - LOCAL ADVICE

In order to provide you with the best service from the start, you will be assigned a personal contact who will always be at your side with any technology and information you may need.

- Your healthcare partner with many years of experience
- Location-independent working thanks to private cloud
- Data storage always in Switzerland
- One partner for the entire digitalisation process
- Personal, local contact person as single point of contact

[LEARN MORE](#)

DIGITAL WORKPLACE

Our digital workplace is based on a flexible and scalable solution and can be adapted at any time if required. In this way, you also remain flexible and efficient.

- Your industry applications are fully integrated
- Work securely from anywhere
- Independent collaboration tools without public cloud use
- One platform for the entire digitisation process
- Microsoft 365 integration and independent cloud backup

[LEARN MORE](#)

ABSOLUTE DATA SECURITY

Data security is as important to us as it is to you. Our guidelines are strict and external certifications also give you the security of knowing you are using the right provider.

- Absolute DSGVO & CH-DSG compliance
- HIPAA-compliant & ISO-certified private cloud
- Data encryption according to FIPS 140-2
- 100% data sovereignty & data security
- Dedicated private cloud environment

[LEARN MORE](#)

PROTECTION AGAINST CYBER ATTACKS

So you don't have to worry about attacks and blocked systems, we offer you comprehensive cyber security against any attempted attacks.

- Highest standards and certifications
- Consulting for your security certifications
- Enterprise Cyber Defense Team to support you
- State-of-the-art security features that are always up to date
- We already protect over 10,000 users every day

[LEARN MORE](#)

SECURE COMMUNICATION

With secure connection to external networks and secure email archiving, we offer privacy-compliant communication and storage for your practice.

- Connection to HIN doctors' network
- Integration into any hospital network
- Connection to hospital applications
- Legally compliant e-mail archiving
- Backup and recovery of all data for up to 10 years

SELECTION OF OUR CUSTOMERS IN HEALTH & SOCIAL CARE

